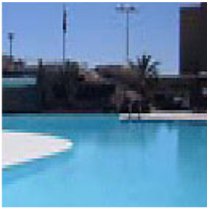
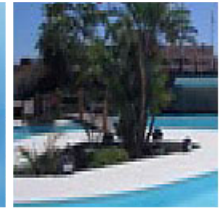


Automatic Vent Valve ALCV3-13

For Ozone Systems

HEADWORKS
BIOLOGY
SEPARATION
MEMBRANE
▶ DISINFECTION
BIOSOLIDS
SYSTEMS



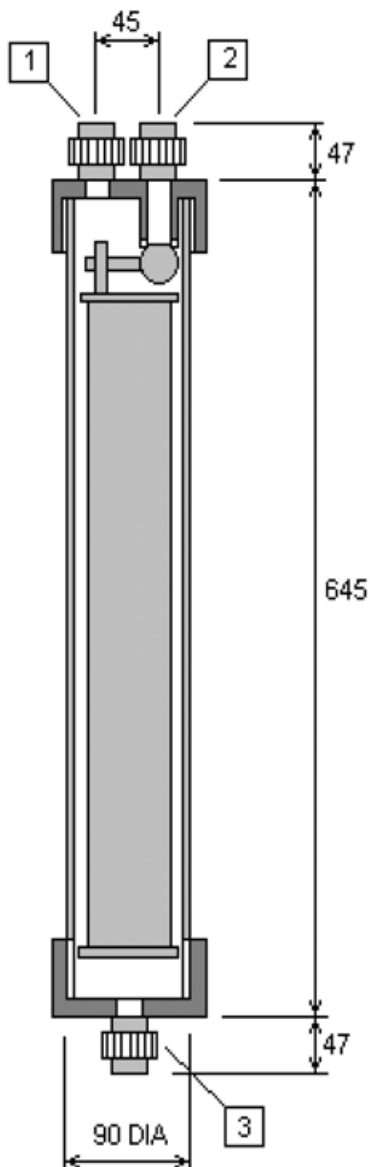
OZONE

OZONE
DESTRUCTION

SPA

SWIMMING POOL

▶ Ancilliary Products



- 1 - 1/2" PVC PLAIN UNION (IMPERIAL)
- 2 - 1/2" PVC PLAIN UNION (IMPERIAL)
- 3 - 1/2" PVC PLAIN UNION (IMPERIAL)

MATERIALS OF CONSTRUCTION

TOP AND BOTTOM CAPS - uPVC

VALVE BODY - CLEAR uPVC

FLOAT ASSEMBLY - uPVC

BALL AND STEM - uPVC

BALL SEAT - PTFE

PIPE CONNECTIONS - 1/2" uPVC UNIONS

INSTALLATION INFORMATION

- ISOLATING VALVES SHOULD BE FITTED TO ALLOW FOR VALVE MAINTENANCE.
- HEAVY WALL uPVC PIPE SHOULD BE USED TO CONNECT THE VALVE.
- THE VALVE SHOULD BE SUITABLY SUPPORTED EITHER BY A CLAMP OR SIMILAR
- GAS FLOWRATE - 10 M³/HR MAX.
- SYSTEM PRESSURE - 2.5 bar g MAX